

READY

THE INNOVATOR OF OUR INDUSTRY®

DESIGN₂-TITE® Nitrogen Gas Springs **are Simpler, Superior and Safer** **than other brands.**



*They truly are....
Better by Design*

Better by Design

Our Design is Simpler

... providing a more rugged construction with fewer parts for longer life

Compare the Simplicity of Our Design to the Competition

DESIGN₂-TITE® Gas Springs

- Piston Rod**
 - One piece construction
 - Hollow piston rod lowers pressure rise
- SinterLube® Top Cap**
 - Designed with greater bearing area for improved support and guiding
 - One piece construction creates a mechanical solid for greater structural strength and safety
 - SinterLube® alloy material provides greater guide and a self-lubricating surface eliminating need to lubricate.
- Threaded Upper and Lower Body Construction**
 - ISO standard clamping groove on body
- Threaded Bottom Cap**
 - ISO standard clamping groove
 - ISO standard mounting and charge port

Other Gas Springs

- Dust Cover
- C-Style Retaining Ring
- Multi-piece, Cartridge Assembly
- Piston Rod
- Rod Retainer
- Retainer Wear Ring
- Body Assembly
- Inlet Valve and Port Plug

READY Offers Five Distinct Lines of Nitrogen Gas Springs:



The Performance Line - RLP Series

Greater initial force in a smaller diameter body.



The Micro Line - RLM Series

All new, all rebuildable

....making repairs so easy, you can do them yourself

No One Has A Gas Spring This Simple to Repair.

We encourage you to repair your own gas springs because with the unique design of DESIGN₂-TITE®, we've made it easy for you to do the repair yourself.

- **Save Money - Why throw away "Throw Away" gas springs?**
- **All of our gas springs are repairable with common shop tools - no "special" tools required.**
- **Lower cost labor can now make repairs.**

Here's How:

1. Discharge the gas spring.

Unthread the end cap from the spring body and push the piston rod out the bottom of the top cap. Remove and discard the wiper, seal and O-ring.



2. To ease installation, lubricate the piston, new wiper, seal and O-ring contained in the seal kit. Install the new wiper, seal and O-ring. Push the piston rod fully into the bottom of the top cap until it stops.

3. Apply 242 Loctite® to the external threads of the end cap and tighten. With the piston rod fully extended, recharge the gas spring.



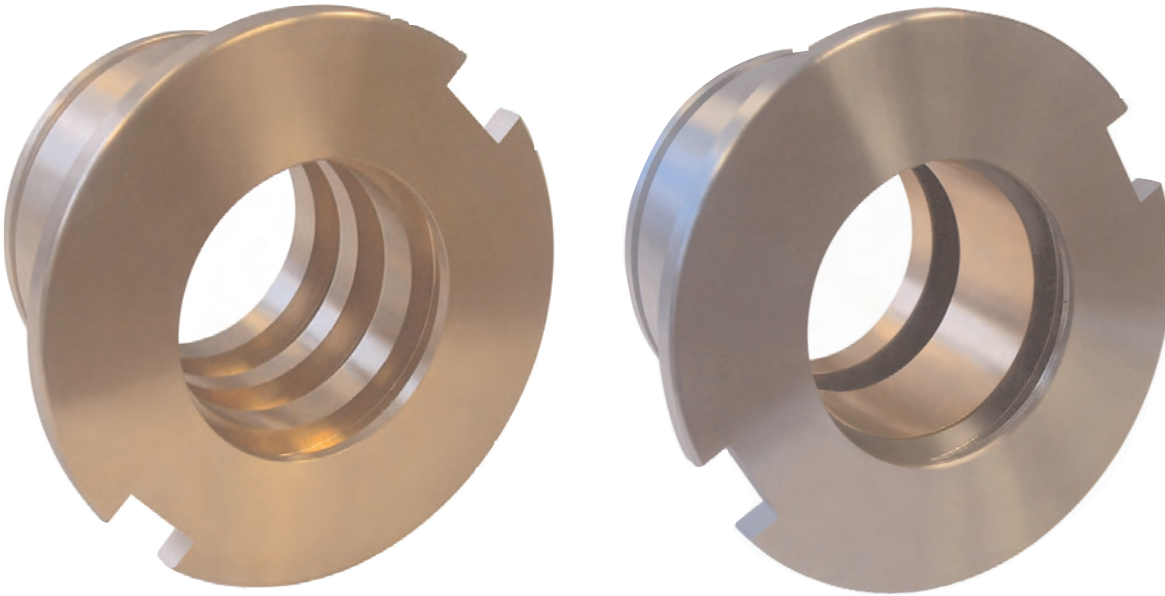
Better by Design

Our Design is Superior

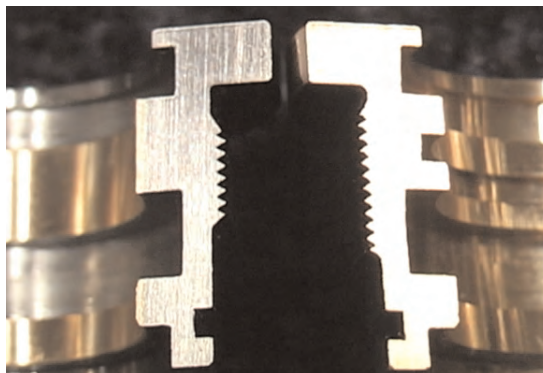
... announcing the Industry's First Self-Lubricating Nitrogen Gas Spring

Our all-new SinterLube® Top Caps Provide Continuous Self-Lubrication between the Piston and the Top Cap.

Take a Closer Look...



- By eliminating the lubrication chamber, we've increased the guide surface up to 25% making **DESIGN₂-TITE®** gas springs one of the best guided gas springs in the industry.
- Better guiding means reduced risk of loss of pressure from side load.
- SinterLube® top cap helps the gas spring run at a lower temperature for longer life.
- Superior construction and state of the art seal technology.



The North American Line - RLS Series

Our proven ISO gas spring redesigned for the North American market.



The ISO Line - RL Series

Our original gas spring now meets ISO and VDI requirements.



The Sub Compact Line - RLSC Series

Short stroke, high force in a compact body.

Better by Design

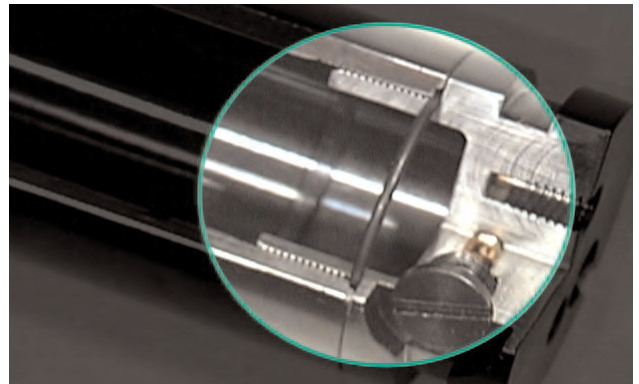
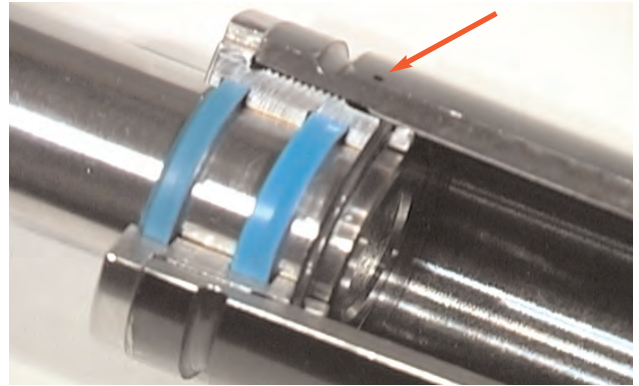
Our Design is Safer

...If you forget to discharge the nitrogen gas prior to disassembly, our design provides for automatic Discharge. How do we do it?

Take a Closer Look...

If your operator attempts to disassemble a **DESIGN₂-TITE®** Gas Spring without first discharging the nitrogen gas.

- We've Provided for Safety Vent Holes in our Gas Springs.
- We've Provided for the Extrusion of the O-Ring.



Reduce the risk of a **faulty repair** with the better design of **DESIGN₂-TITE®** gas springs.

- No more hammering out C-style retaining rings.
- No more fighting to keep the multi-piece cartridge assembly together during handling and installation.
- No more concerns about installing the cartridge assembly upside down.
- No more fears that the C-Style retaining ring was damaged or installed improperly.

Why Not Reduce Your Risk of an Accident with the Built In Safety of DESIGN₂-TITE® Gas Springs?

READY TECHNOLOGY, INC.

333 Progress Rd. • Dayton, OH 45449

(800) 543-4355 • 937-866-7200 • fax (937) 866-7226

readytechnology.com