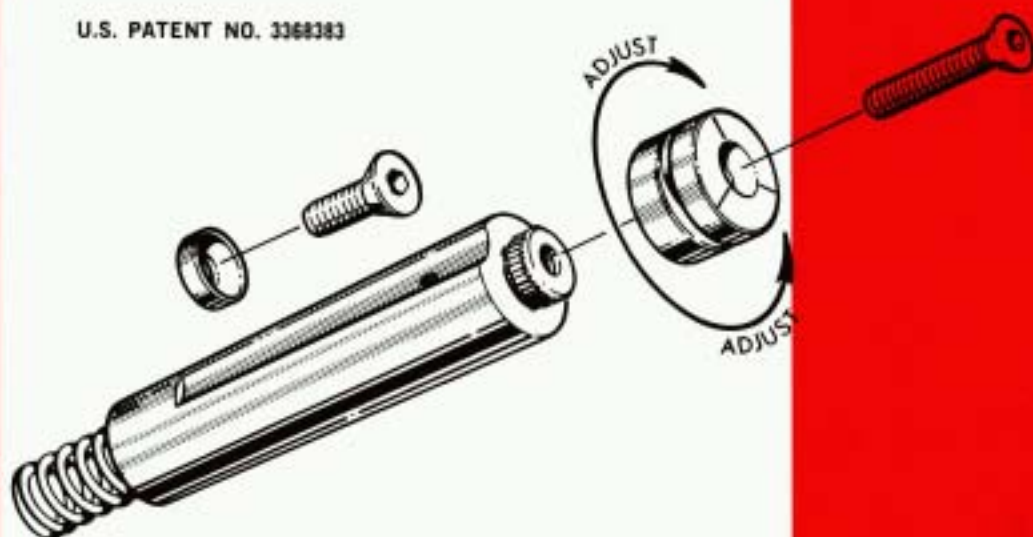




ADJUSTABLE STOCK LIFTERS

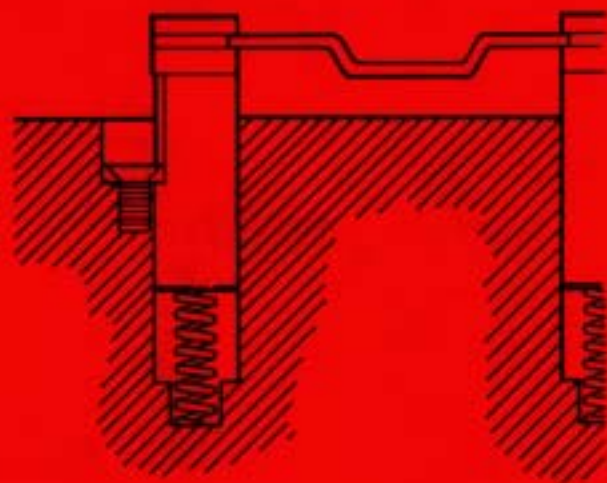
U.S. PATENT NO. 3368383



**RUGGED
PRECISION
LONG LIFE
ADJUSTABLE**

- HARDENED & PRECISION GROUND
- INTERCHANGEABLE - REPLACEABLE HEADS
- ENGINEERED SPRINGS FOR UNIFORM LOADS AND LONG LIFE
- ADJUSTABLE GUIDE SLOT — ONE BORE LOCATION
- MINIMUM SPRING DEPTH — RELATIVE TO STROKE
- STOCKED — NATIONWIDE DISTRIBUTION
- ADAPTERS — FOR CUSTOM RAILS
- MARKED FOR EASY ALIGNMENT
- VENTED

DISTRIBUTED BY



Manufactured by

APPLIED MECHANICS CORP.

14200 IRONWOOD DRIVE, GRAND RAPIDS, MICHIGAN 49504
616-677-1355 FAX 616-677-5969

SEE FOLLOWING PAGES FOR FULL SCALE TRACING TEMPLATES

PRINTED IN U.S.A.

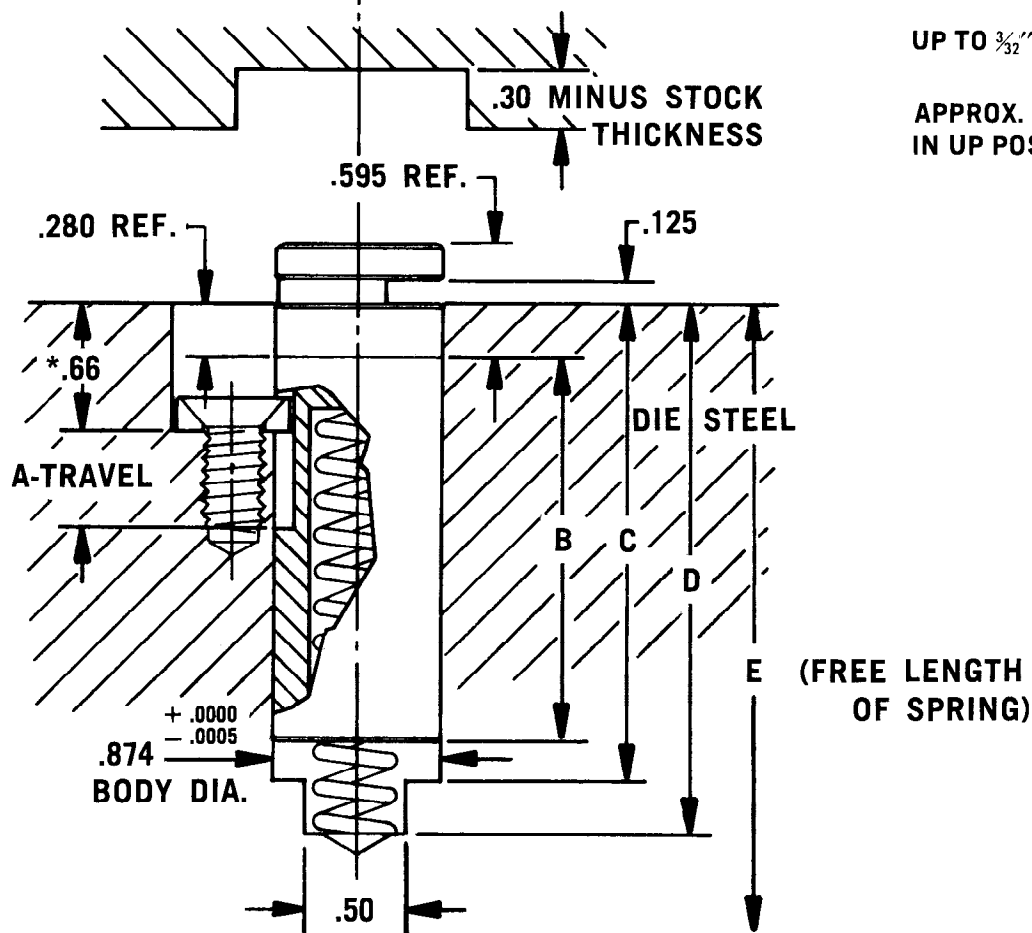
Technical drawing of a Lifter Body assembly, showing cross-sections and dimensions.

Dimensions and Tolerances:

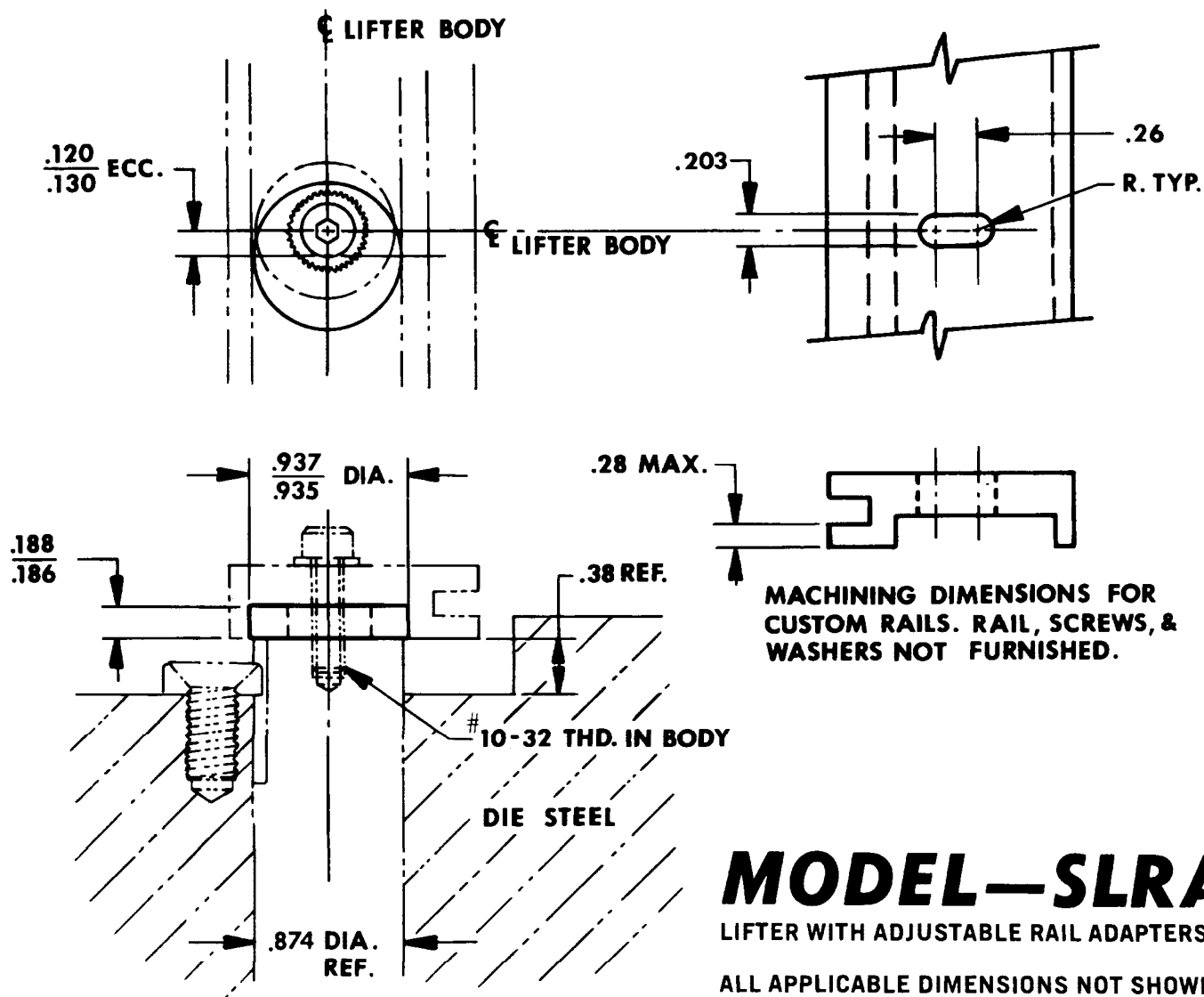
- Top Dimension:** $.656 \pm .005$
- Left Section:**
 - Bore:** $.656 \text{ C' BORE}$
 - Inner Diameter:** $.362 \text{ MAX.}$ / $.1735 \text{ MIN.}$
- Right Section:**
 - Eccentricity:** $.125 \text{ ECC. REF.}$
- Assembly Label:** **LIFTER BODY**
- Material/Part Label:** **5/16 - 18x3/4 FL. HD. SCR. (FURNISHED)**
- Stock Dimension:** **STOCK + .03**

STANDARD ADJUSTABLE STOCK LIFTER

**APPROX. 8# LIFTING PRESSURE
IN UP POSITION**



***DEPTH IS FOR STANDARD TRAVEL INCREMENTS OF ¼ INCH
INCREASE DEPTH TO DECREASE TRAVEL BETWEEN STANDARD SIZES**



MODEL NO. (STD)	MODEL NO. (RAIL)	A	B	C	D	E	STD. MODEL HEAD
SLA — .50	SLRA — .50	.50	2.00	2.44	2.78	3.00	SLA — .50 H
“ — .75	“ — .75	.75	2.25	2.69	3.22	3.75	“ — .75 H
“ — 1.00	“ — 1.00	1.00	2.50	2.94	3.75	4.62	“ — 1.00 H
“ — 1.25	“ — 1.25	1.25	2.75	3.19	4.28	5.50	“ — 1.25 H
“ — 1.50	“ — 1.50	1.50	3.00	3.44	4.81	6.38	“ — 1.50 H
“ — 1.75	“ — 1.75	1.75	3.25	3.69	5.34	7.25	“ — 1.75 H
“ — 2.00	“ — 2.00	2.00	3.50	3.94	5.78	8.00	“ — 2.00 H
“ — 2.50	“ — 2.50	2.50	4.00	4.44	5.78	8.00	“ — 2.50 H

WHEN ORDERING — SPECIFY QUANTITY AND COMPLETE MODEL OR PART NO.

WHEN ORDERING REPLACEMENT HEADS ONLY — GIVE MODEL NO.
COMPLETE WITH SUFFIX “H” AS SHOWN

EACH LIFTER COMES PACKAGED COMPLETE — BODY, HEAD (OR RAIL
ADAPTER), SPRING, SCREWS & RETAINER